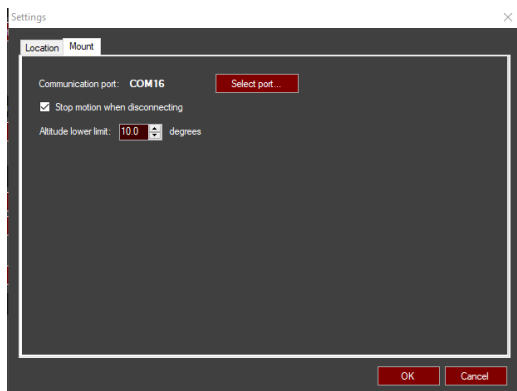


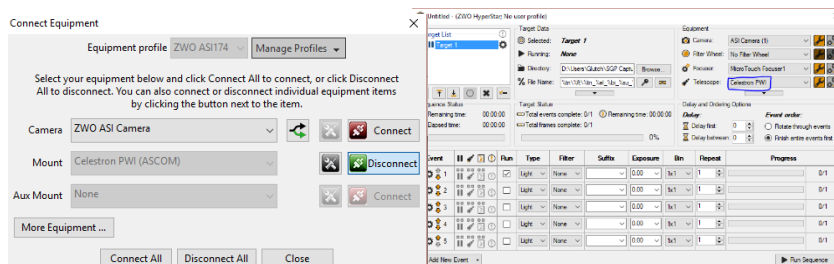
Mount setup using PWI software with starsense hand controller.

Friday, May 11, 2018
2:41 PM

- Download and install the latest PWI software from http://software.celestron.com/installers/CPWI/CPWI_1.2.1/Setup_PW1_1.2.1_Installer.zip?_ga=2.62538796.1609252213.1526519880-1875346896.1526519880
- Set up mount as you normally do, i.e. set up facing roughly north, balance OTA then using whatever method you normally would use polar align the mount.
- Make sure you have the USB 2 cable connected to your P.C. and Mount.
- If you have a star sense unit and wish to make the next part easy then use star sense to do an alignment followed by moving the mount to its home position.
- Open up PWI and under setup click on the Settings button. Select the Mount tab then choose the button "Select Port..." and click on the com port showing as used by your mount. Select "Use Selected Port".



- Still in PWI click on the OK button and connect to your mount by clicking on the connect button.
- Start the alignment process by selecting the "Align telescope" button and choose to use a new tpoint model.
- Using the suggested stars do the tpoint alignment. (This is where the star sense comes in handy.) As the alignment process settles on the position it believes the star to be, use the hand control to tell it to slew to the star that the tpoint alignment process expects to be in the center. Then use the direction buttons to center the star.
- Once the star is centered tell PWI that is the case and move on to the next alignment star and follow the above process for each of the suggested stars.
- Once your tpoint model is completed save it in case of power issues.
- Now you should be able to open up your guiding and acquisition software, I use PDH2 and SGP, and in the mount/telescope section choose the Celestron PWI (ascm) option and use this to connect.

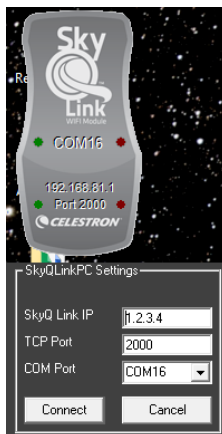


- If you want to slew to a specific location you would use the PWI software to do so.
- If you're like me and do Astrophotography you can create your list of objects in a third party web site or software such as DSO-Browser, Astro Planner, Deep-Sky Planner or Starry Nights to create and import that list into your acquisition software and automatically slew to the objects.

Mount setup using PWI software with starsense hand controller and SkyQLink Wireless.

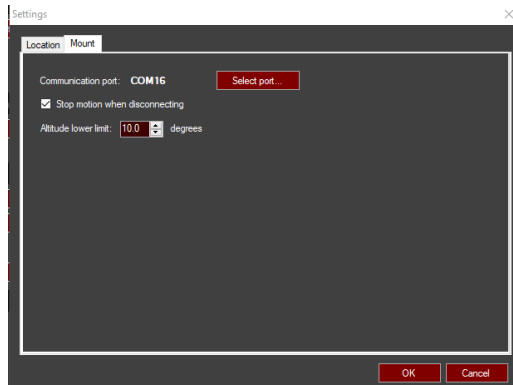
Friday, May 11, 2018
2:41 PM

- Download and install the latest PWI software from http://software.celestron.com/installers/CPWI/CPWI_1.2.1/Setup_PWI_1.2.1_Installer.zip?_ga=2.62538796.1609252213.1526519880-1875346896.1526519880
- Download and install SkyQ Link software from https://s3.amazonaws.com/celestron-site-support-files/support_files/SkyQLinkPCInstall_1_0_4.zip (You will need to right click the exe file and select the compatibility tab then choose run as administrator and check the box for "Run this program in compatibility Mode for: Windows 7")
- Once the install is complete go to the location it installed to and right click the exe file and select the compatibility tab then choose run as administrator and check the box for "Run this program in compatibility Mode for: Windows 7"

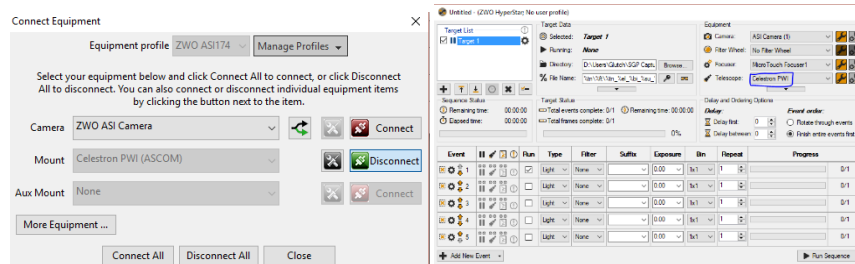


- Start the SkyQ Link software and Set SkyQ Link IP to 1.2.3.4, The TCP Port to 2000 and the COM Port to COM16 and click on Connect.
- Set up mount as you normally do, i.e. set up facing roughly north, balance OTA then using whatever method you normally would use polar align the mount.
- Make sure you have the USB 2 cable connected to your P.C. and Mount.
- If you have a star sense unit and wish to make the next part easy then use star sense to do an alignment followed by moving the mount to its home position.

- Open up PWI and under setup click on the Settings button. Select the Mount tab then choose the button "Select Port..." and click on the com port showing as used by your mount, COM Port 16). Select "Use Selected Port".



- Still in PWI click on the OK button and connect to your mount by clicking on the connect button.
- Start the alignment process by selecting the "Align telescope" button and choose to use a new tpoint model.
- Using the suggested stars do the tpoint alignment. (This is where the star sense comes in handy.) As the alignment process settles on the position it believes the star to be, use the hand control to tell it to slew to the star that the tpoint alignment process expects to be in the center. Then use the direction buttons to center the star.
- Once the star is centered tell PWI that is the case and move on to the next alignment star and follow the above process for each of the suggested stars.
- Once your tpoint model is completed save it in case of power issues.
- Now you should be able to open up your guiding and acquisition software, I use PDH2 and SGP, and in the mount/telescope section choose the Celestron PWI (ascom) option and use this to connect.



- If you want to slew to a specific location you would use the PWI software to do so.
- If you're like me and do Astrophotography you can create your list of objects in a third party web site or software such as DSO-Browser, Astro Planner, Deep-Sky Planner or Starry Nights to create and import that list into your acquisition software and automatically slew to the objects.